

								groves			
	('000 ha)	486	326.1	67.9	56.9	0.5	2.14	6.01	3.6	17.1	5.8

1.4	Major Soils (common names like red sandy loam deep soils (etc.,))*	Area ('000 ha)	Percent (%) of total Geographical area
	Tarai Sandy soils	-	23.27
	Tarai Clay loams	-	25.30
	Plain Sandy clay soils	-	23.90
	Plain Clay loam soils	-	8.60
	Plain Sandy loam soils	-	8.72
	Plain loam soils	-	10.21

1.5	Agricultural land use	Area ('000 ha)	Cropping intensity(%)
	Net sown area	326.1	172.41
	Area sown more than once	206.7	
	Gross cropped area	532.8	

1.6	Irrigation	Area ('000 ha)
	Net irrigated area	-
	Gross irrigated area	-
	Rainfed area	-

Sources of Irrigation	Number	Area ('000 ha)	Percentage of total irrigated area
Canals		64.01	19.3
Tanks		0.004	
Open wells		0.1	
Bore wells	17.5	174.05	47.2
Lift irrigation schemes			
Micro-irrigation			
Other sources			
Total Irrigated Area		368.329	
Pump sets		135	36.6
No. of Tractors			
Groundwater availability and use* (Data source: State/Central Ground water Department /Board)	No. of blocks/ Tehsils	(%) area	Quality of water (specify the problem such as high levels of arsenic, fluoride, saline etc)
Over exploited			
Critical			
Semi- critical			
Safe			
Wastewater availability and use			
Ground water quality			

*over-exploited: groundwater utilization > 100%; critical: 90-100%; semi-critical: 70-90%; safe: <70%

1.7 Area under major field crops & horticulture (as per latest figures of 2008-09)

1.7	Major field crops cultivated	Area ('000 ha)							
		<i>Kharif</i>			<i>Rabi</i>			Summer	Grand total
		Irrigated	Rainfed	Total	Irrigated	Rainfed	Total		
Rice	162.6	0.2	162.8					162.8	
Sorghum	0.4		0.4					0.4	
Maize	8.8	0.3	9.2					9.2	
Pigeon pea	4.4		4.4					4.4	

	Wheat				155.3	0.06	155.36		155.36
	Chickpea				260		260		260
	Lentil				478.3	0.003	478.3		478.3

	Horticulture crops - Fruits	Area ('000 ha)		
		Total	Irrigated	Rainfed
	Horticulture crops - Vegetables	Total	Irrigated	Rainfed
	Potato	2.2	2.2	
	Onion	0.1	0.1	
	Others	5.5	5.3	0.2

	Medicinal and Aromatic crops	Total	Irrigated	Rainfed
	Plantation crops	Total	Irrigated	Rainfed
	Fodder crops	Total	Irrigated	Rainfed
	Sorghum	0.11		
	Bajra	1.06		
	Maize	87.9		
	Total fodder crop area	3.6	1.2	2.4
	Grazing land			
	Sericulture etc			

1.8	Livestock	Male ('000)	Female ('000)	Total ('000)
	Indigenous	-	-	468.44
	Non descriptive Cattle (local low yielding)			3.10
	Improved crossbred cattle (Cow & Buffalo only)			296.97
	Non descriptive Buffaloes (local low yielding)			1.49

	Buffaloes			173.07
	Goat			350.41
	Sheep			15.73
	Others (Camel, Pig, Yak, Horse, Monkey etc.)			502.89
	Commercial dairy farms (Number)	-	-	

1.9	Poultry	No. of farms	Total No. of birds ('000)
	Commercial	379	216.10
	Backyard	167	13.15

2.0	Fisheries (Data source: Chief Planning Officer)					
	A. Capture					
	i) Marine (Data Source: Fisheries Department)	No. of fishermen	Boats		Nets	Storage facilities (Ice plants etc.)
			Mechanized	Non-mechanized	Mechanized (Trawl nets, Gill nets)	
	ii) Inland (Data Source: Fisheries Department)	No. Farmer owned ponds		No. of Reservoirs	No. of village tanks	
		-	-	-	-	-
	B. Culture					
			Water Spread Area (ha)	Yield (t/ha)	Production ('000 tons)	
	i) Brackish water (Data Source: MPEDA/ Fisheries Department)		-	-	-	
	ii) Fresh water (Data Source: Fisheries Department)		-	-	-	

1.11 Production and Productivity of major crops (Average of last 5 years: 2004-08)

1.11	Name of	Kharif	Rabi	Summer	Total	Crop
-------------	----------------	---------------	-------------	---------------	--------------	-------------

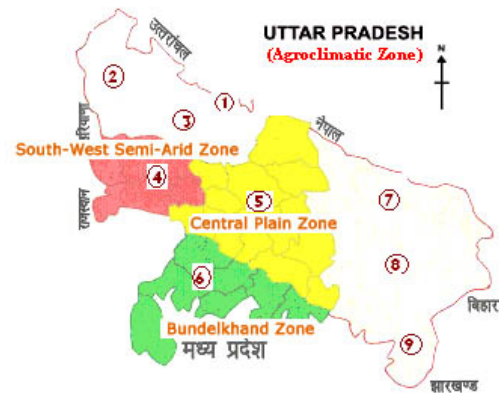
	crop	Production ('000 t)	Productivity (kg/ha)	Production ('000 t)	Productivity (kg/ha)	Production ('000 t)	Productivity (kg/ha)	Production ('000 t)	Productivity (kg/ha)	residue as fodder ('000 tons)
Major Field crops (Crops identified based on total acreage)										
	Rice	307.1	18.8	-	-	-	-	307.1	18.8	
	Sorghum	120.1	10.9	-	-	-	-	120.1	10.9	
	Maize	100.6	11.4	-	-	-	-	100.6	11.4	
	Pigeon pea	341.6	7.8	-	-	-	-	341.6	7.8	
	Wheat	-	-	374.7	24.4	-	-	374.7	24.4	
	Pea	-	-	181.8	11.6	-	-	181.8	11.6	
	Lentil	-	-	316.6	6.6	-	-	316.6	6.6	
	Mustard	-	-	73.6	7.7	-	-	73.6	7.7	
	Potato	-	-	471.9	224.8	-	-	471.9	224.8	

1.12	Sowing window for 5 major field crops (start and end of normal sowing period)	Rice	Maize	Pigeonpea	Wheat	Lentil
	Khariif- Rainfed	3 rd week of June – 3 rd week of July	2 nd week of June – 4 th week of June	1 st week of July - 4 th week of July	-	-
	Khariif-Irrigated	4 th week of June – 2 nd week of August	3 rd week of June – 3 rd week of July	-	-	-
	Rabi- Rainfed	-	-	Early rabi- September - October	3 rd week of October – 3 rd week of November	1 st week of October – 4 th week of October
	Rabi-Irrigated	-	-	-	3 rd week of November – 4 th week of December	

1.13	What is the major contingency the district is prone to? (Tick mark)	Regular	Occasional	None
	Drought		√	
	Flood		√	
	Cyclone			√
	Hail storm			√
	Heat wave			√
	Cold wave		√	
	Frost			√
	Sea water intrusion			√
	Pests and disease outbreak		√	

1.14	Include Digital maps of the district for	Location map of district within State as Annexure I	Enclosed: Yes
		Mean annual rainfall as Annexure 2	Enclosed: Yes
		Soil map as Annexure 3	Enclosed: Yes

Annexure I



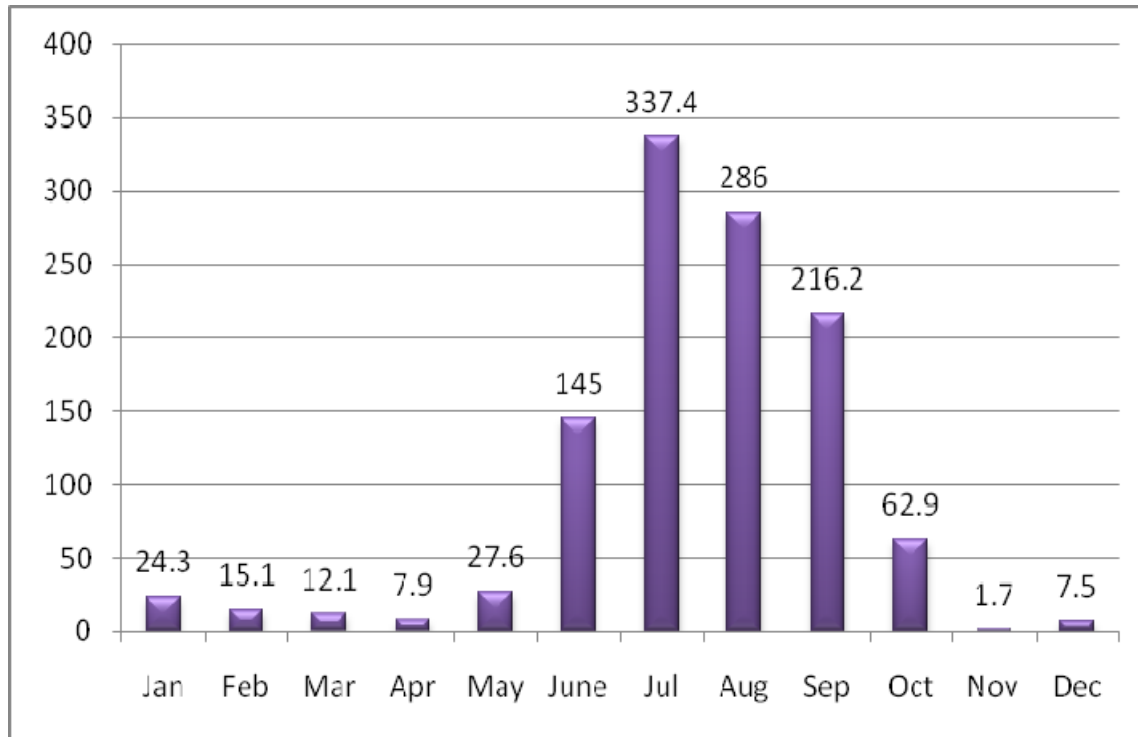
Agroclimatic Zones of U.P.

- 1. Bhabhar and Tarai Zone
- 2. Western Plain Zone
- 3. Mid Western Plain zone
- 4. South Western Plain Zone
- 5. Central Plain Zone
- 6. Bundelkhand Zone
- 7. North Eastern Plain Zone
- 8. Eastern Plain Zone
- 9. Vidhya Zone

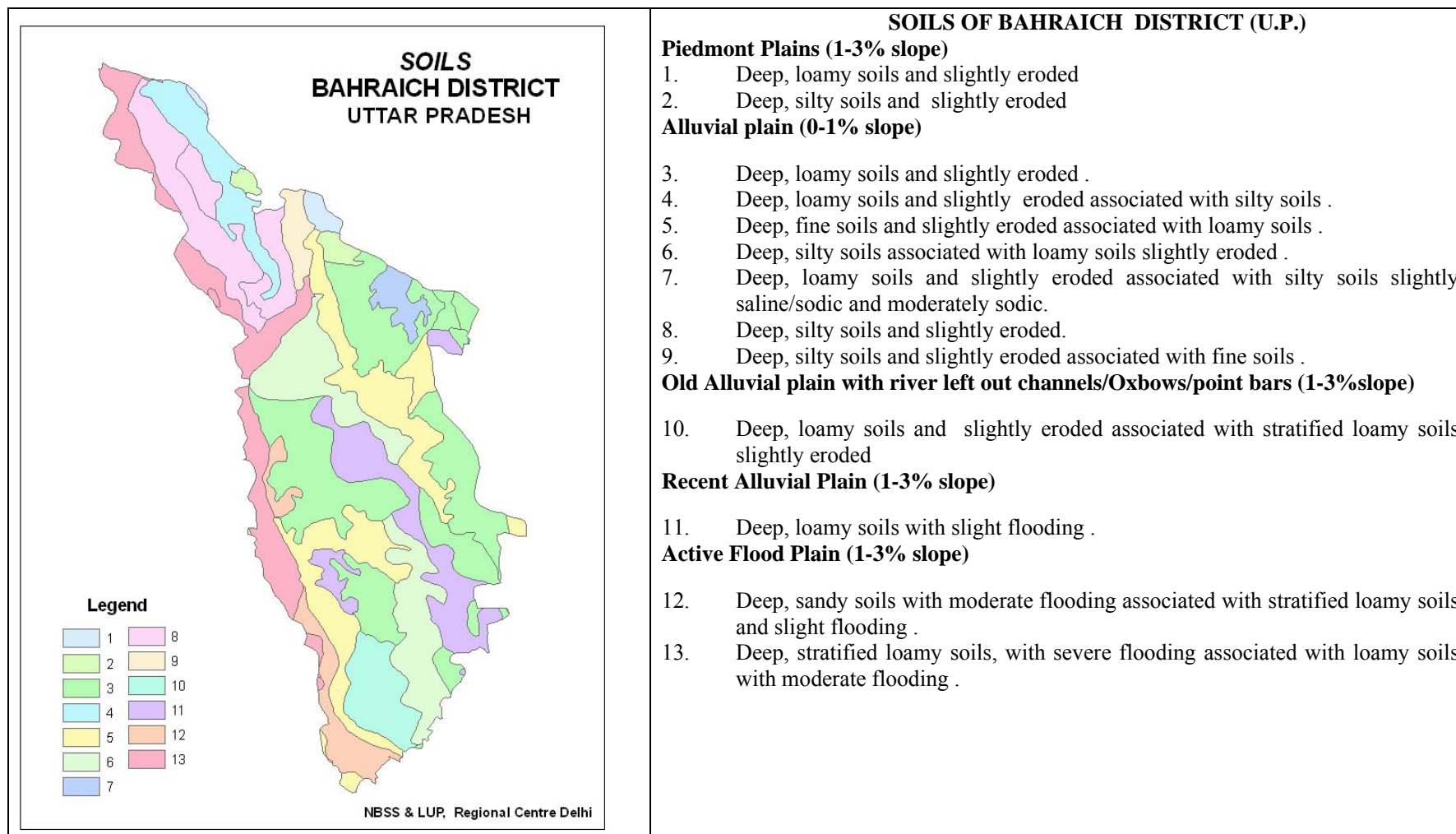
UTTAR PRADESH



Annexure II



Annexure III



2.0 Strategies for weather related contingencies

2.1 Drought

2.1.1 Rainfed situation

Condition	Major Farming situation	Normal Crop / Cropping system	Suggested Contingency measures		
			Change in crop / cropping system including variety	Agronomic measures	Remarks on Implementation
Early season drought (delayed onset) Delay by 2 weeks 1 st week of July	Deep clay loam soils	Rice	Rice Transplanting/Direct seeding of Medium and Short duration varieties of Rice Such as NDR-97, NDR-359,NDR-80,NDR-118, Baranideep etc.	Raise Staggered rice nursery should be grown at 15 days interval in small areas at least two times	
		Maize	Maize-Prakash, Sartaj, Naveen, Tarun.	Intercropping/ mixed cropping of maize/sorghum/ Pearlmillet with long duration varieties of Pigeonpea	
		Pigeonpea	Pigeonpea	Sowing on raised beds, Intercropping with Maize/Blackgram/Greengram	

Condition	Major Farming situation	Normal Crop / Cropping system	Suggested Contingency measures		
			Change in crop / cropping system including variety	Agronomic measures	Remarks on Implementation
Early season drought (delayed onset)					

Delay by 4 weeks 3 rd week of July	Deep clay loam soils	Rice-Wheat	Rice-Wheat Transplanting/Direct seeding of Medium and Short duration varieties of Rice Such as NDR-97, NDR-359,NDR-80,NDR-118, Baranideep, Govind,Saket-4, Ratna,IR-36 and Pant-12 etc.	<ul style="list-style-type: none"> •Direct seedling of short duration varieties of Rice such as NDR-97, NDR-80, NDR-118, Saket-4 •Raise Staggered rice nursery should be grown at 15 days interval in small areas at least two times •Adopt SRI system of nursery raising •Transplanting of Rice (beyond 20th July) with 3-4 seedlings/hill to increasing the plant population of 60 hills/m², instead of 50 hills/m². •Pruning of over aged Rice seedlings for better establishment and optimum plant stand •Foliar praying of 2.5 kg Urea + 2.5 kg Potash as to increase the drought tolerance in nursery / standing crops 	<ul style="list-style-type: none"> • Seed-drill under RKVY • Supply of seed through govt. agencies <i>ie.</i> NFSM,RKVY
		Maize	Maize-Prakash, Sartaj, Naveen, Tarun.	Intercropping/ mixed cropping of maize with long duration varieties of Pigeonpea	

		Pigeonpea	No change	Sowing on raised beds Intercropping with Maize/Blackgram/Greengram	
--	--	-----------	-----------	--	--

Condition	Major Farming situation	Normal Crop / Cropping system	Suggested Contingency measures		
			Change in crop / cropping system including variety	Agronomic measures	Remarks on Implementation
Early season drought (delayed onset)					
Delay by 6 weeks 1 st week of August	Deep clay loam soils	Rice-Wheat	Rice-Wheat Paddy: Short duration varieties of paddy such as NDR-97, NDR-80,NDR-118, Pant Dhan-12 should be transplanted/direct seeding.	Direct seeding of rice In case of late transplanting of rice(beyond 20 th July) planting should be dense by increasing the number of seedlings/hill from 2 to 3 to 3 to 4. Adopt SRI system of nursery raising Weeding and interculture Foliar spraying of 2.5 kg Urea + 2.5 kg Potash as to increase the drought tolerance in nursery / standing crops Life saving irrigation in transplanted rice	<ul style="list-style-type: none"> • Seed-drill under RKVY • Supply of seed through govt. agencies <i>ie.</i> NFSM,RKVY

		Maize	Greengram/ Blackgram Greengram: T-44, Pant mung-1, Narendra mung-1 Blackgram : Narendra urd-1, Pant urd-25	Intercropping/ mixed cropping of Greengram/ Blackgram/ maize/sorghum/ Pearlmillet with long duration varieties of pigeonpea Sorghum+green gram(2:2)	
		Pigeonpea	Pigeonpea: Bahar	Maize (Tipekhiya) in Pigeonpea(Narendra Arhar-1) crop in 1:1 row ratio Sowing on raised beds Intercropping with Maize/Blackgram/Greengram Pigeonpea+ Blackgram/Greengram (1:3)	

Condition	Major Farming situation	Normal Crop / Cropping system	Suggested Contingency measures		
			Change in crop / cropping system including variety	Agronomic measures	Remarks on Implementation
Early season drought (delayed onset)					

Delay by 8 weeks 3 rd week of August	Deep clay loam soils	Rice-Wheat	<p>Preference should be given for sowing of Pearlmillet and Sesame</p> <p>Pearlmillet: Pusa 322, 323(Hybrid) and WCC-75, Raj-171(Composite)</p> <p>Sesame: - Type-4, Type-78, Type-12</p> <p>Greengram : T-44, Pant mung-1, Pant mung-2, Samrat, Malviya, Janpriya, Malviya jyoti, Narendra mung-1</p>	<p>Direct sowing</p> <p>In case of late transplanting of rice(beyond 20th July) planting should be dense by increasing the number of seedlings/hill from 2 to 3 to 3 to 4.</p> <p>Foliar praying of 2.5 kg Urea + 2.5 kg Potash as to increase the drought tolerance in nursery / standing crops</p> <p>Life saving irrigation in transplanted rice</p>	<ul style="list-style-type: none"> • Seed-drill under RKVY • Supply of seed through govt. agencies <i>ie.</i> NFSM,RKVY
		Maize	<p>Blackgram : Narendra urd-1,Pant urd-25, Pant urd-19, Uttara, Type-9</p>	<p>Intercropping/ mixed cropping of Greengram/ Blackgram/maize/sorghum/ Pearlmillet with long duration varieties of pigeonpea</p> <p>Land preparation for sowing of early rabi crops like potato,toria,lahi and mustard</p>	
		Pigeonpea	<p>September Pigeonpea Varieties Bahar, PDA-11,</p>	-	

			Pusa-9 should be done till 1 st week of September.		
--	--	--	---	--	--

Condition	Major Farming situation	Normal Crop/cropping system	Suggested Contingency measures		
			Crop management	Soil nutrient & moisture conservation measures	Remarks on Implementation
Normal onset followed by 15-20 days dry spell after sowing leading to poor germination/ crop stand etc.	Deep clay loam soils	Rice	<p>After seeding of rice if there is break of monsoon by 7 to 10 days and if seedling mortality is observed then re-sowing with the same variety</p> <p>Gap filling/transplanting in rice</p> <p>Using “Sanda” method, plant population can be maintained with sufficient number of tillers in late drought condition as to minimize the production losses</p>	<p>Weeding at critical stages</p> <p>Foliar spraying of 2.5 kg Urea + 2.5 kg Potash as to increase the drought tolerance in nursery / standing crops</p> <p>Life saving irrigation</p> <p>Proper electricity monitoring/rostering system should be ensured in area for regular supply of electricity for pumping of water for life saving irrigation</p>	<ul style="list-style-type: none"> • Supply of inter cultural implements through RKVY • Farm ponds through IWSP programme • Pulse crop seeds supply through NFSM
		Maize	<p>Ridge sowing</p> <p>Gap filling/ Thinning to maintain optimum plant population</p>	<p>Leaf mulching to conserve the soil moisture</p>	

		Pigeonpea	Ridge sowing Gap filling/ Thinning to maintain optimum plant population	Leaf mulching to conserve the soil moisture	
--	--	-----------	--	---	--

Condition		Suggested Contingency measures			
Mid season drought (long dry spell, consecutive 2 weeks rainless (>2.5 mm) period)	Major Farming situation ^a	Normal Crop/cropping system ^b	Crop management ^c	Soil nutrient & moisture conservation measures ^d	Remarks on Implementation ^e
At vegetative stage	Deep clay loam soils	Rice	Gap filling/transplanting in rice Foliar spraying of 2% urea to boost up the growth	Weeding as to conserve the residual soil moisture Leaf mulching to conserve the soil moisture Foliar spraying of 2.5 kg Urea + 2.5 kg Potash as to increase the drought tolerance in nursery / standing crops Life saving irrigation from the stored water during the rainy season. Proper electricity monitoring/rostering system should be ensured in area for	

				regular supply of electricity for pumping of water for life saving irrigation	
		Maize	Thinning to maintain proper distance between the plants. Frequent interculture Earthing up in Pigeonpea Foliar spraying of 2% urea to boost up the growth	Foliar spraying of 2% MOP to increase the resistance to drought Leaf mulching to conserve the soil moisture Conservation furrow Life saving irrigation	
		Blackgram/ Greengram			
		Pigeonpea			

Condition	Major Farming situation	Normal Crop/cropping system	Suggested Contingency measures		
			Crop management	Soil nutrient & moisture conservation measures	Remarks on Implementation
Mid season drought (long dry spell)					
At flowering/ fruiting stage	Deep clay loam soils	Rice	Foliar spraying of 2% urea to boost up the growth	Weeding as to conserve the residual soil moisture Leaf mulching to conserve the soil moisture Foliar spraying of 2.5 kg Urea + 2.5 kg Potash as	

				<p>to increase the drought tolerance in nursery / standing crops</p> <p>Life saving irrigation from the stored water during the rainy season.</p> <p>Proper electricity monitoring/rostering system should be ensured in area for regular supply of electricity for pumping of water for life saving irrigation</p>	
		Maize	<p>Thinning to maintain proper distance between the plants.</p> <p>Frequent interculture</p> <p>Earthing up in Pigeonpea</p> <p>Foliar spraying of 2% urea to boost up the growth</p>	<p>Foliar spraying of 2% MOP to increase the resistance to drought</p> <p>Leaf mulching to conserve the soil moisture</p> <p>Conservation furrow</p> <p>Life saving irrigation</p>	
		Blackgram/ Greengram			
		Pigeonpea			

Condition		Suggested Contingency measures			
Terminal drought (Early withdrawal of monsoon)	Major Farming situation	Normal Crop/cropping system	Crop management	Rabi Crop planning	Remarks on Implementation
	Deep clay loam soils	Rice	<p>Alternate management of irrigation should be ensured for provide life saving irrigation</p> <p>Proper electricity monitoring/ rostering system should be ensured in area for regular supply of electricity for pumping of water for life saving irrigation</p>	<p>Better pulverization should be made for conservation of soil moisture following by planking for sowing of early rabi crops like toria and potato etc..</p> <p>Toria variety- type-9, type-36, PT-303, PT-30 and ageti Rai should be sown in 1st week of September while Bhawani variety can be sown in 2nd week of September.</p> <p>In fallow fields to sow Ageti rai, potato varieties like Kufri Ashoka, Kufri Chandra mukhi and other vegetable crops like spinach,reddish coriander etc.</p>	

		Maize	Harvesting of intercrop at physiological maturity (Maize, Blackgram and Greengram)	Better pulverization should be made for conservation of soil moisture following by planking for sowing of early rabi crops like toria and potato etc.. Toria variety- type-9, type-36, PT-303, PT-30 and ageti Rai should be sown in 1 st week of September while Bhawani variety can be sown in 2 nd week of September.	
		Blackgram/ Greengram	Earthing up of Pigeonpea Harvesting of green cobs (maize) and sell in market and remaining portion will be used for fodder.		
		Pigeonpea	Life saving irrigation to pigeonpea if possible.	-	

2.1.2 Drought - Irrigated situation

Condition	Major Farming situation	Normal Crop/cropping system	Suggested Contingency measures		
			Change in crop/cropping system	Agronomic measures	Remarks on Implementation
Delayed release of water in canals due to low rainfall	Deep clay loam soils	Rice – Wheat / Pea/ Lentil	Short duration rice varieties- NDR 97, Ratna, Narendra 118, Narendra 97, Pant Dhan 12, HUR 105, Induri Sambha, HUR 2-1, HUR-3022 to be grown under aerobic condition.	Community nursery Direct seeding in small beds. Use of micro-irrigation systems viz. sprinkler & sub-surface irrigation.	Breeder's seed will be supplied by BHU and NDUAT, Faizabad. Seed drills RKVY and supply of seeds NFSM
Limited release of water in canals due to low rainfall	Sandy clay loam soils	Rice – Wheat / Pea/ Lentil	Rice\ Maize \ Sorghum Grow short duration aerobic rice such as NDR 97, NDR 118, Govind, Vandana, Varanideep, Susk Samrat , HUR 105 Maize: Malviya hybrid Makka-2, Naveen & Jaunpuri Pearl millet : WCC 75, Raj 171, Pusa 23 Sorghum: CSH-16, CHS-9, CHS-14, CSV-13 & CSV-15 should be grown on ridges for fodder/grain purposes.	Community nursery, Direct seeding in small beds. Use of micro-irrigation systems viz. sprinkler & sub-surface irrigation.	

Non release of water in canals under delayed onset of monsoon in catchment	Sandy clay loam soils	Rice – Wheat / Pea/ Lentil	Shift to only aerobic rice Or Rice may be replaced by pulses Greengram: Pant Mung -8, PDM-11, Samrat, Jyoti, Jagriti, Janpriya, Jan Chetana & Jan Kalyani Blackgram: Type 9, Pant U 19, Pant U 35, Narendra Urd 1 & Azad Urd-3 Sesame :Type 4, T-12, T-13, Shekhar, GT1, TC 25 &TC 289	Direct seeding in small beds. Use of micro-irrigation systems viz. sprinkler & sub-surface irrigation.	
Lack of inflows into tanks due to insufficient /delayed onset of monsoon	Sandy clay loam soils	Rice – Wheat / Pea/ Lentil	Sorghum\ Pearl millet	Conservation tillage, Sowing of Pearl millet & Sorghum for grain purposes at 45 cm on ridges. Foliar application of 2% MOP Use of mulches (straw/dust).	
Insufficient groundwater recharge due to low rainfall	Sandy clay loam soils	Rice – Wheat / Pea/ Lentil	Rice should be replaced with pulses (green gram & black gram), oilseeds (Sesame) in <i>Kharif</i> and wheat by Chickpea & lentil in <i>Rabi</i> season.	Direct seeding in small beds. .	

2.2 Unusual rains (untimely, unseasonal etc) (for both rainfed and irrigated situations)

Condition	Suggested contingency measure			
	Vegetative stage	Flowering stage	Crop maturity stage	Post harvest
Continuous high rainfall in a short span leading to water logging				
Rice	Provide drainage	Proper bunding, drain out excess water	Harvesting at physiological maturity	Shift to safer place
Wheat	Provide drainage	Drain out excess water	Harvesting at physiological maturity	Shift to safer place
Pigeonpea	Provide drainage and Practice of sowing on ridges	Make inter-row furrow to Drain out excess water	Harvesting at physiological maturity	Shift to safer place
Heavy rainfall with high speed winds in a short span²	-	-	-	-
Outbreak of pests and diseases due to unseasonal rains				
Rice, Wheat, Chickpea, Pigeonpea, Pearl millet	Need based plant protection (integrated pest and disease management)	Need based plant protection (integrated pest and disease management)	Need based plant protection (integrated pest and disease management)	Safe storage against stored grain pest and diseases

2.3 Floods

Condition	Suggested contingency measure ^o			
	Seedling / nursery stage	Vegetative stage	Reproductive stage	At harvest
Transient water logging/partial inundation¹				
Rice	<ul style="list-style-type: none"> • Arrangement of Drainage channel • Drainage of water from the rice 	<ul style="list-style-type: none"> • Removal of excess water • Drainage of excess water through drainage channel 	<ul style="list-style-type: none"> • Provide drainage • Prevent premature seed germination 	<ul style="list-style-type: none"> Harvesting at physiological maturity Shift produce to safer place

	<p>fields</p> <ul style="list-style-type: none"> • Raise community nursery in the village 	should be made.	<ul style="list-style-type: none"> • Foliar spray of 5% urea 	Provision for buying / marketing of discoloured grain at the earliest to provide relief
Maize	<p>Provide drianage , creation of surface drains at appropriate places to avoid water logging Removal of silt from contour staggered trenches</p> <p>Divergent drain be made to collect runoff at suitable points either in artificially Created ponds or diverting to wells.</p> <p>Drainage of excess water through drainage channel should be made.</p>	Divergent drain be made to collect runoff at suitable points either in artificially created ponds or diverting to wells.	Divergent drain be made to collect runoff at suitable points either in artificially created ponds or diverting to wells.	
Continuous submergence for more than 2 days²				
Rice	<ul style="list-style-type: none"> • Drainage of excess water through drainage channel • Transplanting of deep water rice –Madhupur, Jalmagn, Jalpriya, Jalnidhi, Awarodhi <p>In low lying areas;</p> <ol style="list-style-type: none"> 1. Water stagnation upto 30-50 cm ht.- Mahsuri, Jal lahri, Swarna, Sabha mahsuri 2. Water stagnation upto 50-100 	<ul style="list-style-type: none"> • Just after finishing of floods, topdressing of urea could be ensured in the field 	<p>If crops fails due to water logging caused by excess rainfall, then resowing by end week of August or early maturing varieties of crops should be taken</p> <p>Drainage of excess water through drainage</p>	<ul style="list-style-type: none"> • Preference should be given for planting of Autumn Sugarcane in the month of Oct so that their grand growth completed to the maxi. Extent prior to floods. • Planting of Sugarcane on raised beds instead of flat bed. • Emphasis could be given

	cm height – Chakya-69, Madhukar, Jalpriya 3. >100 cm height – Jalnidhi, Jalmagna 4. Water logging- Awarodhi, Madhukar Drainage of excess water through drainage channel should be made.		channel should be made. If top dressing of urea is not possible due to water stagnation/floods, then foliar spray of 5% urea solution can be done.	for cultivation of Toria, Blackgram, Greengram/Sunflower
Sea water intrusion	Not Applicable			

2.4 Extreme events: Heat wave / Cold wave/Frost/ Hailstorm /Cyclone

Extreme event type	Suggested contingency measure ^r			
	Seedling / nursery stage	Vegetative stage	Reproductive stage	At harvest
Heat Wave	Not applicable			
Cold wave				
Wheat	Provide light irrigation	Provide light irrigation	Provide light irrigation	-
Pigeonpea	Mulching	Light irrigation for survival	Light irrigation for survival	Harvesting at physiological maturity
Frost	Not applicable			
Hailstorm	Not Applicable			
Cyclone	Not Applicable			

2.5 Contingent strategies for Livestock, Poultry & Fisheries

2.5.1 Livestock

	Suggested contingency measures		
	Before the event ^s	During the event	After the event
Drought			
Feed and fodder availability	<ul style="list-style-type: none"> • Storage of straw and silage in Silo pit according to population of animal 		
Drinking water	<ul style="list-style-type: none"> • Maintenance and inspection of Tubewells, Hand pumps, Ponds, Tanks etc. 		
Health and disease management	<ul style="list-style-type: none"> • Vaccination of animals against FMD, HS, B.Q. and Dewarming 		
Floods			
Feed and fodder availability	<ul style="list-style-type: none"> • Increase the area of fodder 	<ul style="list-style-type: none"> • Availability of safe place for the animals 	<ul style="list-style-type: none"> • Sowing of rabi fodder crops - Berseems, Lucerne, Oat and other rabi crops
Drinking water	<ul style="list-style-type: none"> • Crops according to popu. and their storage 	<ul style="list-style-type: none"> • Distribution of stored feed and fodders according to the popu. of affected 	<ul style="list-style-type: none"> • Drain of infected stored water and supply of fresh water for drinking.
Health and disease management	<ul style="list-style-type: none"> • Arrangement of clean drinking water in sufficient water in growth 	<ul style="list-style-type: none"> • Provide neat & clean drinking water 	<ul style="list-style-type: none"> • Proper treatment of affected (animals vaccination & Dewarming)
Cyclone			
Feed and fodder availability	<ul style="list-style-type: none"> • Arrangement of clean drinking water in sufficient water in growth 	<ul style="list-style-type: none"> • Organize health camp regularly 	-
Drinking water			
Health and disease management			
Heat wave and cold wave			
Shelter/environment management	<ul style="list-style-type: none"> • Shelter house/Farm house should not face directly 	<ul style="list-style-type: none"> • Proper availability of shelter, drinking water and feeds & fodder as per need of the animals 	<ul style="list-style-type: none"> • Provide shelterbelts of good quality materials

Health and disease management	<ul style="list-style-type: none"> •Ensure the availability of drinking water and as well as electrolytes 		<ul style="list-style-type: none"> •Routine health check up by veterinary doctors
-------------------------------	--	--	--

^s based on forewarning wherever available

2.5.2 Poultry

	Suggested contingency measures			Convergence/linkages with ongoing programs, if any
	Before the event ^a	During the event	After the event	
Drought				
Shortage of feed ingredients				
Drinking water	<ul style="list-style-type: none"> •Deep tube well provide clean drinking 	<ul style="list-style-type: none"> •Provide the drinking water 	<ul style="list-style-type: none"> •Provide the drinking water 	
Health and disease management	<ul style="list-style-type: none"> •Vaccination against infectious diseases 	<ul style="list-style-type: none"> •Vaccination 	<ul style="list-style-type: none"> •Vaccination for infectious diseases such as- Ranikhet, infectious Coryza, IBD, ILT 	
Floods				
Shortage of feed ingredients	<ul style="list-style-type: none"> • Inspection of established Tubewell & other water sources 	<ul style="list-style-type: none"> •Provide the drinking water 	<ul style="list-style-type: none"> •Provide the drinking water 	
Drinking water	<ul style="list-style-type: none"> •Vaccination against infectious diseases 	<ul style="list-style-type: none"> •Vaccination 	<ul style="list-style-type: none"> •Vaccination for infectious diseases such as- Ranikhet, infectious Coryza, IBD, ILT 	
Health and disease management				
Cyclone				
Shortage of feed ingredients				
Drinking water				
Health and disease management				
Heat wave and cold wave				
Shelter/environment management	<ul style="list-style-type: none"> •Arrangement of proper 	<ul style="list-style-type: none"> •Maintenance of 	<ul style="list-style-type: none"> •Heat check up 	

	shelter and cooler/heater to maintain the proper temp. of the shelter house	surrounds temp. and prevent the birds from direct exposure of heat/ cold waves		
Health and disease management	• Vaccination	• Vaccination	• Vaccination • Availability of neat & clean water	

^a based on forewarning wherever available

2.5.3 Fisheries/ Aquaculture

	Suggested contingency measures		
	Before the event ^a	During the event	After the event
1) Drought			
A. Capture			
Marine			
Inland	Arrange for alternative water resources	Sell the produce at minimum acceptable size to the consumer	Lime Application
(i) Shallow water depth due to insufficient rains/inflow	Stocking of Air breathing		
(ii) Changes in water quality		Increased water temperature	
(iii) Any other		Decrease dissolve oxygen	
B. Aquaculture			
(i) Shallow water in ponds due to insufficient rains/inflow	Arrange for alternative water resources	Minimum disturbance to the fish i.e. minimum fishing activities	Maintain the pond properly by liming, manuring and fertilization
(ii) Impact of salt load build up in ponds / change in water quality			
2) Floods			
A. Capture			
Marine			
Inland	Harvest the large size fish	Protect the escape of fish	Manage the inlet, outlet structures along with pond land
(i) No. of boats / nets/damaged			
(ii) No.of houses damaged			

(iii) Loss of stock			
(iv) Changes in water quality			
(v) Health and diseases			
B. Aquaculture			
(i) Inundation with flood water	Make 2.5 m high bylonnet boundry on the band of pond	Check for outlet to remain open	Close outlet and open inlet
(ii) Water contamination and changes in water quality		Close inlet and divert water receiving channel	Treatment of water with Alum and $KmnO_4$
(iii) Health and diseases			Feeding, liming, manuring and fertilization of ponds
(iv) Loss of stock and inputs (feed, chemicals etc)			
(v) Infrastructure damage (pumps, aerators, huts etc)			
3. Cyclone / Tsunami			
A. Capture			
B. Aquaculture			
(i) Overflow / flooding of ponds		Stocking of fish sped for a period of 1-2 month	
(ii) Changes in water quality (fresh water / brackish water ratio)	Liming	Lime+alum	Harvesting and selling fish seeds
(iii) Health and diseases		Lime+alum	
(iv) Loss of stock and inputs (feed, chemicals etc)			Netting of fish+ $KmnO_4$ application
(v) Infrastructure damage (pumps, aerators, shelters/huts etc)			
4. Heat wave and cold wave		Not applicable	

^a based on forewarning wherever available